

KSB EasySelect®. Simply the right choice.



KSB EasySelect takes you there – step by step.

Have you been looking for a quick and easy way to find the ideal pump for your requirements? We've got the answer: the KSB EasySelect selection software. You enter what is important for your project, and our selection tool will guide you through KSB's range of pumps to the best solution for your application. KSB EasySelect is at your disposal around the clock. Start your search anytime based on any criteria that matter to you.

You don't have to be a registered user to select pumps. Have solutions recommended for your applications, then e-mail or phone your KSB contact person for details. If you are a registered user, you will enjoy even more advantages. You will be able to access your customer-specific net prices and purchase the required product directly via the KSB Web-Shop. If any questions on the software or any technical queries arise, our hotline will be pleased to assist you.

KSB EasySelect – benefits galore

- Make use of product literature, typical tenders, GAEB DA XML data and CAD files.
- Enjoy the ease of being guided step-by-step.
- Start an application-based search to your specifications.
- Use the program any time you like.
- Know it is always up-to-date.
- Access your net prices.
- Look at interchangeability lists for several product families.
- Order with ease.



You name the application – we name the pump.

We are a solutions provider. This is why we have developed KSB EasySelect to help our customers find the perfect solution for their requirements. The selection software not only provides you with ample information – we have also made sure that it won't take you long to find a solution.

Start your step-by-step search by selecting one of the sectors: industry, building services, water or waste water. Next, tell us which general application you would like to use the pump for. Then define your precise application.

The image illustrates the KSB EasySelect software interface, showing the selection process for pumps based on application sectors and specific requirements.

The main interface displays a 3D visualization of a city and industrial area, with arrows pointing to the selected sectors: **Building services** and **Industry**.

The software provides detailed selection screens for each sector:

- Building services:**
 - Heating, ventilation and air conditioning
 - Air conditioning and refrigeration engineering, central water, heating engineering, district heating and district cooling
 - Water supply
 - Pressure boosting and hot lighting systems, calculator calibration, irrigation, swimming pools and domestic water supply
 - Wastewater and sewage disposal
 - Waste water and sewage disposal, sewage lifting units, waste water pump stations
- Industrial and general engineering - pumps:**
 - General Industry
 - Industrial washing machines, industrial water treatment, industrial cooling units, industrial boilers and hot water applications, fire fighting
 - Chemical Industry
 - Steel plants, fine chemical, wine processing, drink processing
 - Process Engineering
 - Surface treatment, heat transfer, paper industry, food and beverages, steel, pulp and paper, pulp mill, hot water, technical gases, hot bath, hot gas desulfurization
 - Oil & Gas / Petrochemicals
 - Gas transport, collection and distribution, oil services, oil distribution and oil treatment
 - Marine Engineering
 - Ship, boat, fishing, water level, oil tank, pressure, compressed

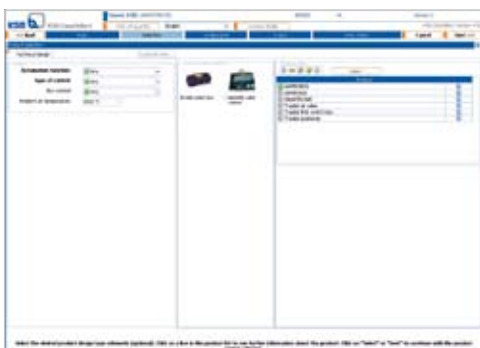
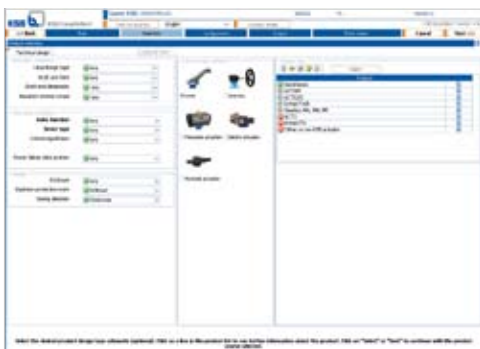
The bottom left screenshot shows a detailed 3D visualization of a building's internal systems, including heating, ventilation, and air conditioning (HVAC) units, water supply, and waste water disposal. The bottom right screenshot shows a detailed selection screen for industrial pumps, with categories like **Industrial washing machines**, **Industrial cooling units**, **Machine tool engineering**, **Welding**, **Hot water applications / hot steam boilers**, and **Fire fighting**.

Search, find, order – easy with a capital E.

Enter what is relevant for your project regarding duty point and operating conditions. If you have got a preference for one or several specific type series or pump designs, make a pre-selection. Else, let the program do it for you. You have now already reached the optimum product recommendation for your project. If you like, you can proceed to find a matching control system and accessories. Once you are finished with your selection, KSB EasySelect provides you with a clearly-structured summary of all data. Documents, typical tenders and characteristic curves for your configuration are available in PDF format. All you have to do is download them. The program also enables data exchange of services specifications via GAEB DA XML. CAD files in various formats can conveniently be ordered by e-mail.

For any questions, further support or direct orders, simply phone or e-mail your KSB sales representative with the information gained in KSB EasySelect.

The image displays several screenshots of the KSB EasySelect software interface, illustrating the search and selection process. The screenshots show various input fields, pump selection options, performance graphs (Total Developed Head vs. Flow Rate), and a detailed Composite Data Sheet for a selected pump configuration. The Composite Data Sheet includes technical specifications, performance curves, and contact information for KSB.



You can now also select your valves with KSB EasySelect®.

KSB EasySelect® shows you the way to the world of configured valves. It is the first selection program of our industry to include both pumps and valves.

To quickly and easily find a matching valve, use the well-structured Direct Search. Or select the type series by entering the operating parameters or design, and find your valve in only a few steps. While you are there, simply select a matching actuator and automation solution. If you like, you can also configure valve actuators and automation solutions separately.

For valves, too, KSB EasySelect® presents you with all selection data on a clearly laid out, downloadable output page. From now on you can select both pumps and valves – with KSB EasySelect®.

Register for the full range of benefits.

For registered users the program has even more to offer: You might want to enjoy the advantage of viewing your customer-specific net prices, for example. This means you will have all the information you need to order your pump directly via the KSB Web-Shop – or to discuss the details of your configuration and price overview with your KSB sales representative. If any questions on the software or any technical queries arise, our hotline will be pleased to assist you.

The image displays two overlapping screenshots of the KSB Web-Shop software interface. The background screenshot shows a detailed configuration page for a pump, with various technical specifications and options listed in a grid format. The foreground screenshot is a smaller window titled 'Price information on the product(s) you selected:'.

Item No.	Designation	Weight	Net price
00	Standard G 200-200 G3 1 ST	213,000 KG	4.706,95 EUR

Method of installation: Flange, flange, coupling, motor
 Type series: Standard
 Size: Size 80 ISO
 Shaft seal code: ST-D Shafting box (standard)
 Material variant: Material variant G
 Baseplate type: U-profile baseplate
 Coupling type: Non-spacer type (N)
 Motor flange: KSB
 Shaft seal type: Shafting box

Size per aggregate: 213,000 KG 4.706,95 EUR

The background screenshot shows a configuration page for 'Standard G 200-200 G3'. It includes sections for 'Hydraulic performance', 'Shaft design', 'Materials', 'Sealing', 'Flanges', 'Shaft seal', 'Shaft connection design', 'Protection type', and 'Device category'. Each section lists various options and their corresponding values, such as 'Flow rate: 200.00 m³/h', 'Shaft seal: ST-D', and 'Protection type: Without'.

**For further information
please contact us at:**
www.ksb.com/contact

Your access to KSB EasySelect.

Are you curious to see what KSB EasySelect can do? Feel free to try it out:

- Online under www.ksb.com/easyselect
- Via KSB's homepage under www.ksb.com
- If you are already a registered KSB Web-Shop user, enter your personal KSB Web-Shop access data under <http://shop.ksb.com>

We will also be pleased to arrange a personal meeting with you to look at the features of KSB EasySelect together. If you haven't got access to the internet, we will provide you with an offline version of KSB EasySelect on DVD.

If you would like to become a registered user or receive an offline version on DVD, please don't hesitate to contact your KSB sales representative.

More space for solutions.



KSB Aktiengesellschaft
Johann-Klein-Straße 9
67227 Frankenthal (Germany)
www.ksb.com